

TUNNEL FORMWORK SOLUTIONS

隧道模板解决方案

COMPANY PROFILE

公司介绍

GETO is mainly engaged in Green Construction and New Energy.

Green construction includes formwork and prefabricated construction, specifically aluminium formwork, climbing system, steel formwork, steel-framed timber formwork, fair-faced concrete building, assembly precast concrete components, PPVC/ MIC precast housing molds and prefabricated steel structure.

The main focus of new energy is investment, construction, and operation of "Photovoltaics, Storage, and Charging" projects.

GETO was listed on the ChiNext board of the A-share market in 2021, and currently has established 12 production bases around the world, registered 31 international trademarks in different countries and regions. Our products and services have sold well worldwide.

志特集团主营绿色建筑和新能源两大板块。

绿色建筑包括模架及装配式建筑，即铝模，爬升式模架，钢模板体系，钢框木模，清水混凝土特色建筑，装配式建筑 PC、整屋装配式 PPVC/ MIC，装配式钢结构。

新能源主营“光、储、充”项目投资、建设、运维。

“志特新材”于 2021 年在 A 股创业板挂牌上市，目前已在全球设立 12 大生产基地，在 31 个国家和地区注册了“GETO®”国际商标，产品和服务遍及全球。



CONTENTS

目录

01 _____ P4

PRODUCT INTRODUCTION
产品介绍

02 _____ P5

PRODUCT CATEGORIES
产品分类

03 _____ P6

PRODUCT ADVANTAGES
产品优势

04 _____ P8

OPERATIONAL FLOW OF THE FORMWORK
施工流程

05 _____ P16

PROJECT CASES
项目案例

06 _____ P18

SERVICE
服务

COMPANY PROFILE

产品介绍

01



In line with the development trend of the construction industry, GETO has successfully launched the tunnel formwork system, which realizes the balance of construction cost, construction efficiency and construction technology by taking into account the factors of construction convenience, comprehensive cost and product turnover rate, and it is also the fastest and most economical way to build high-quality earthquake-resistant condominiums, villas, student dormitories and hotels.

志特顺应建筑业的发展趋势，综合考虑了施工便利性、综合成本、产品周转率等因素，成功推出了隧道模系统，实现了施工成本、施工效率与施工工艺的平衡，这也是建造高质量抗震公寓、别墅、学生宿舍和酒店最快且最经济的方法。

PRODUCT CATEGORIES

产品分类

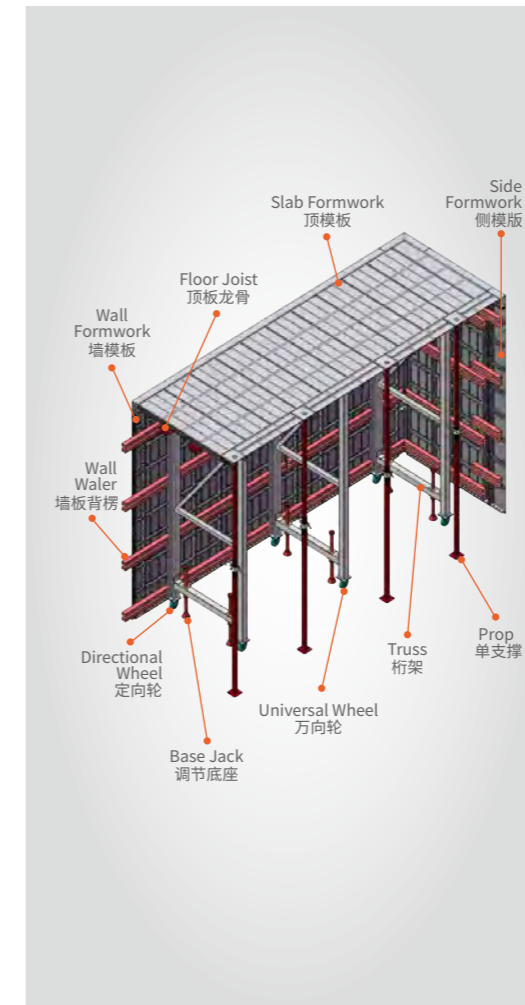
02

Tunnel formwork system mainly consists of formwork system, supporting system and connecting system, with lifting platform (opening platform, stairwell platform, elevator shaft platform) and external wall operation platform as auxiliary system. At present, GETO provide two kinds of tunnel formwork systems for your choice.

隧道模体系主要由模板系统、支撑系统和连接系统组成，另以提升平台（开间料台、楼梯间料台、电梯井料台）、外墙操作平台作为辅助系统。目前，志特提供两种材质的隧道模供您选择。

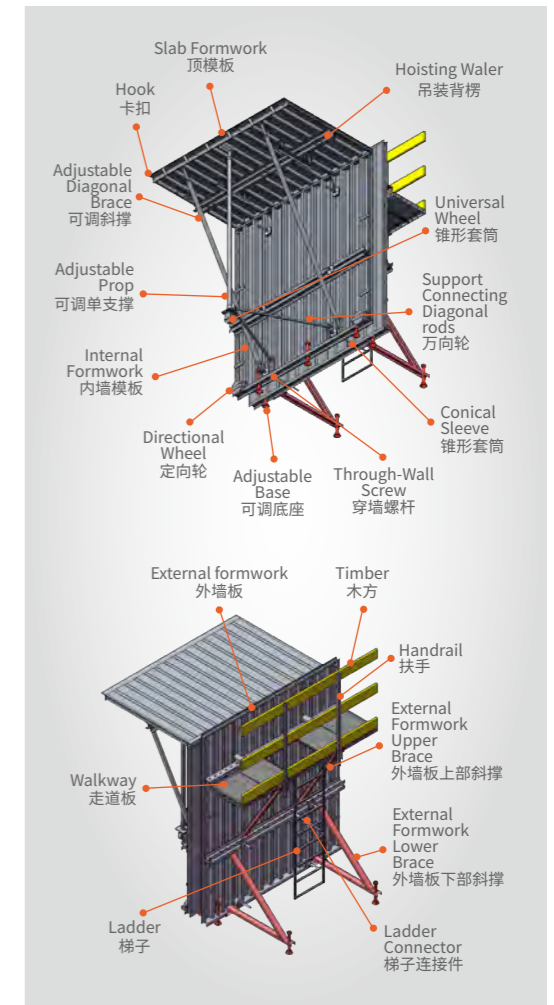
ALUMINIUM TUNNEL FORMWORK

铝制隧道模



STEEL TUNNEL FORMWORK

钢制隧道模



PRODUCT ADVANTAGES 产品优势

ALUMINIUM TUNNEL FORMWORK 铝制隧道模



• **Difference of the structure:**

The main body is an integrated aluminium formwork.

• **结构差异点:**

主体为拼接成一体的铝模板

• **Advantages:**

1. Fast overall installation speed;
2. High standardization, and high material reutilization rate, with wide range of application area;
3. Flexible assembly and disassembly, simple process, reduced labor input, relatively low cost, high safety performance;
4. High scrap value of aluminium material;
5. Lower deadweight and smaller crane specification requirements;
6. Seamless integration with the quick deck concept, high turnover rates.

• **优势:**

1. 整体安装速度快;
2. 标准化模板, 材料重复利用率高, 可应用的施工场景多;
3. 装拆灵活, 工艺简单, 减少人工投入, 成本相对低, 安全性能高;
4. 铝合金残值率高;
5. 自重较小, 对塔吊规格要求较小;
6. 与早拆理念进行了无缝融合, 高周转率。

STEEL TUNNEL FORMWORK 钢制隧道模



• **Difference of the structure:**

The main body is a monolithic steel formwork.

• **结构差异点:**

主体为整体的钢模板

• **Advantages:**

1. Simple formwork erection process, low labor force;
2. Tightly spliced, not easy to deform;
3. Good integrity of formwork, strong seismic resistance;
4. Good insulation performance, conducive to winter concrete insulation;
5. Large formwork dismantling with the high level of mechanization.

• **优势:**

1. 支模工艺简单, 用工量少;
2. 拼缝严密, 不易变形;
3. 模板整体性好, 抗震性强;
4. 保温性能好, 有利于冬期混凝土的保温;
5. 大模板拆装, 机械化水平高。

OPERATIONAL FLOW OF THE FORMWORK 施工流程

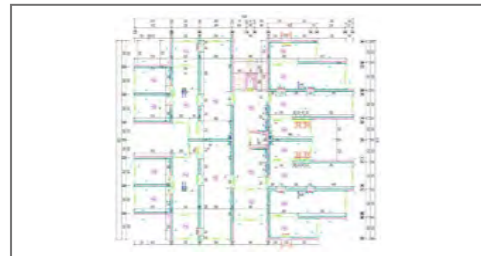
ALUMINIUM TUNNEL FORMWORK INSTALLATION AND OPERATIONAL METHOD 铝制隧道模——安装和施工方法

Assembling Flow / 拼装流程:

• **Step-1:**

Familiarize with the drawings and arrange for someone to transfer materials to avoid confusion.

熟悉图纸，安排专人调运材料，避免材料混乱。



• **Step-3:**

Assemble the wall formwork and fix it temporarily with bolts and corresponding nuts and spacers.

墙模板拼装，用螺栓及对应的螺母及垫片临时固定。



• **Step-2:**

Preparation of assembling site, in order to protect the formwork from being scratched and the flatness of the surface, place the square wood at an interval of 50mm, to ensure that the formwork can be elevated.

拼装场地准备，为保护模板不被刮伤及表面的平整度，摆放好木方，间隔 50mm，确保能将模板架空。

• **Step-4:**

Assemble the deck formwork and side formwork.

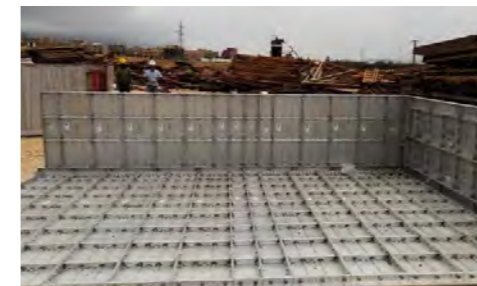
顶板模板和侧模板拼装。



• **Step-5:**

Connect the deck formwork, wall formwork and side formwork, on the basis of acceptance completion, utilize slab corner joint and carry out connection work.

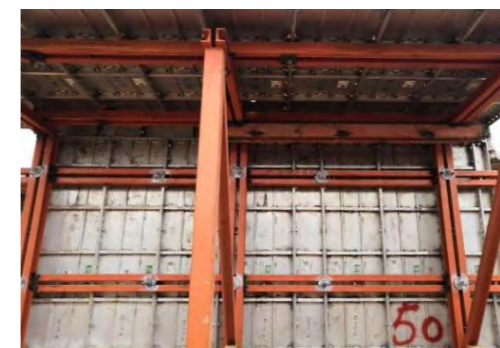
顶板模板、墙模板及侧模板连接，在验收完成的基础上，利用 C 槽，进行连接工作。



• **Step-7:**

Deck panel lifting and waler installation.

顶板吊装，背楞安装。



• **Step-6:**

The keel and truss are installed and connected using the aluminium formwork connecting L type movable tie rod.

龙骨及桁架安装，利用铝模连接配件“L型活动螺杆”进行连接。



• **Step-8:**

Open lifting eyelets, acceptance and number formwork.

开吊装孔眼及验收编号。

• **Step-9:**

Construct by hoisting ready-built components into place.

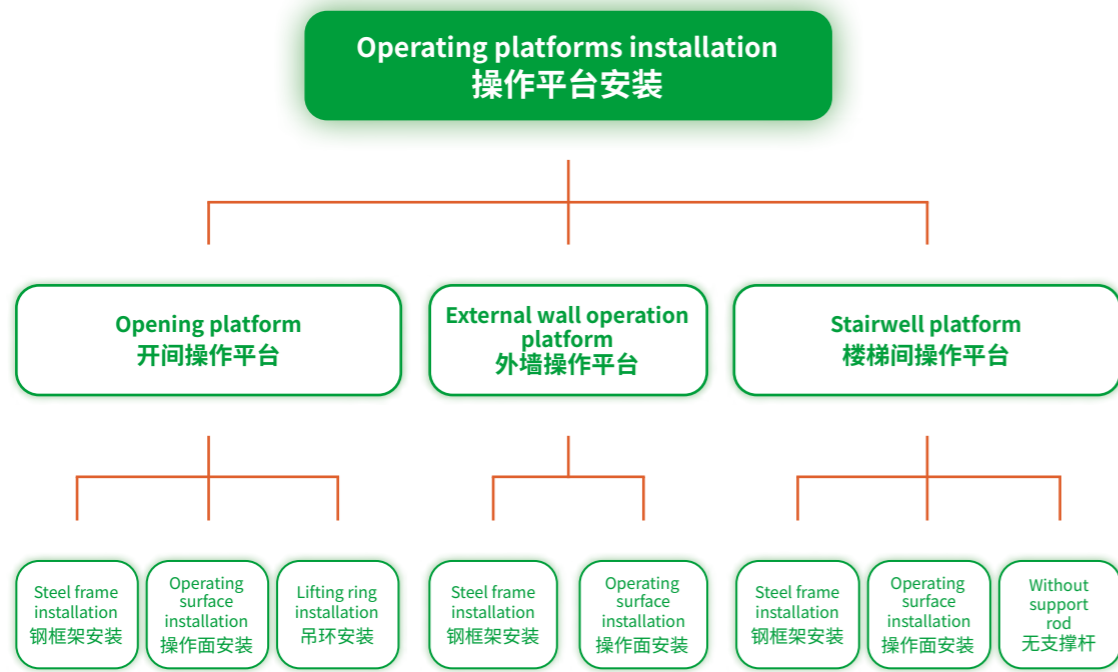
吊装。



OPERATIONAL FLOW OF THE FORMWORK

施工流程

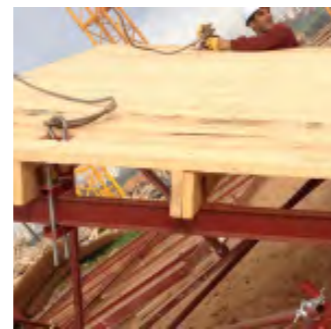
Operating Platforms Installation / 操作平台安装:



Steel Frame Installation
钢框架安装

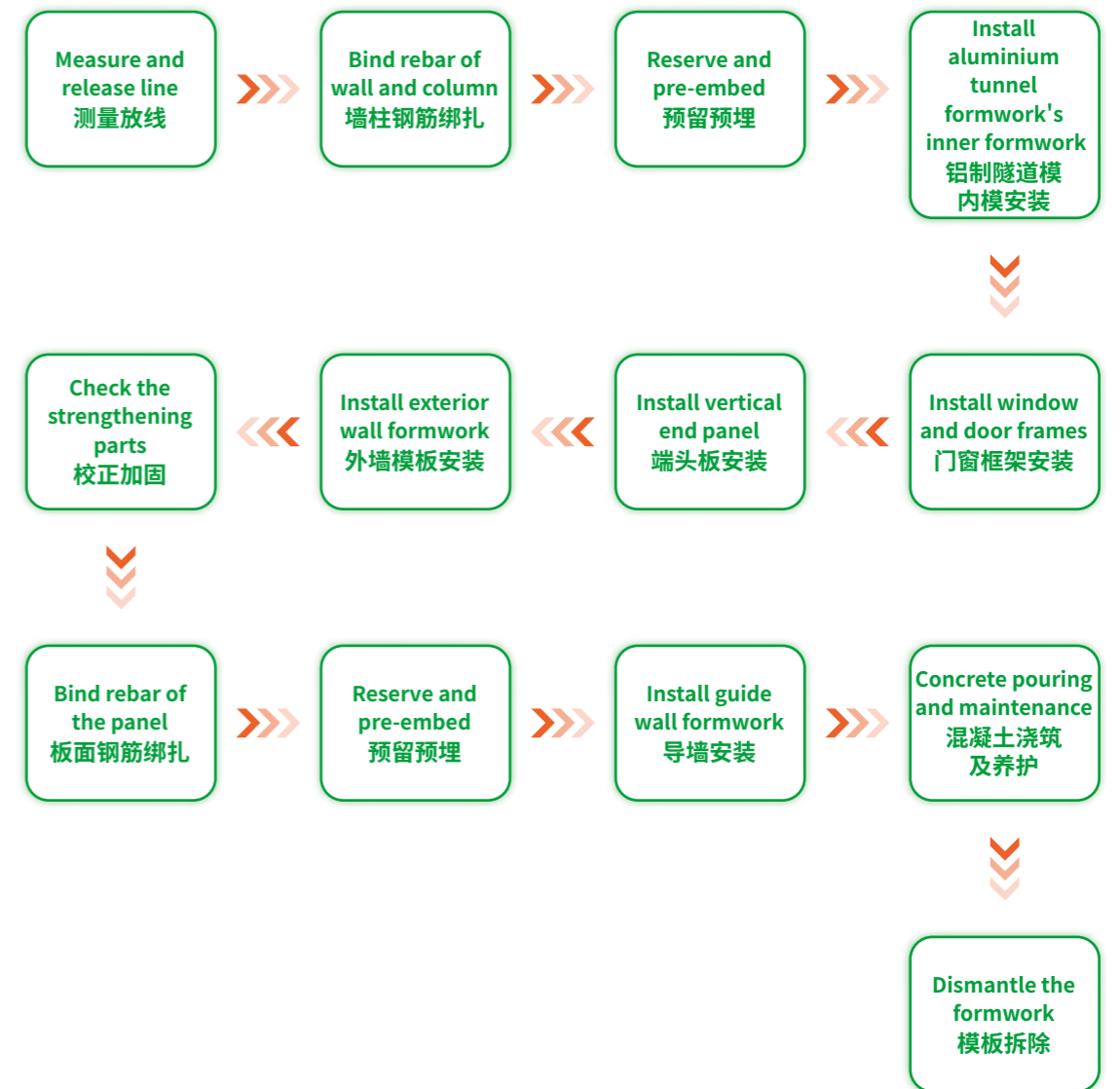


Operating Surface Installation
操作面安装



Lifting Ring Installation
吊环安装

Installation Flow / 安装流程:



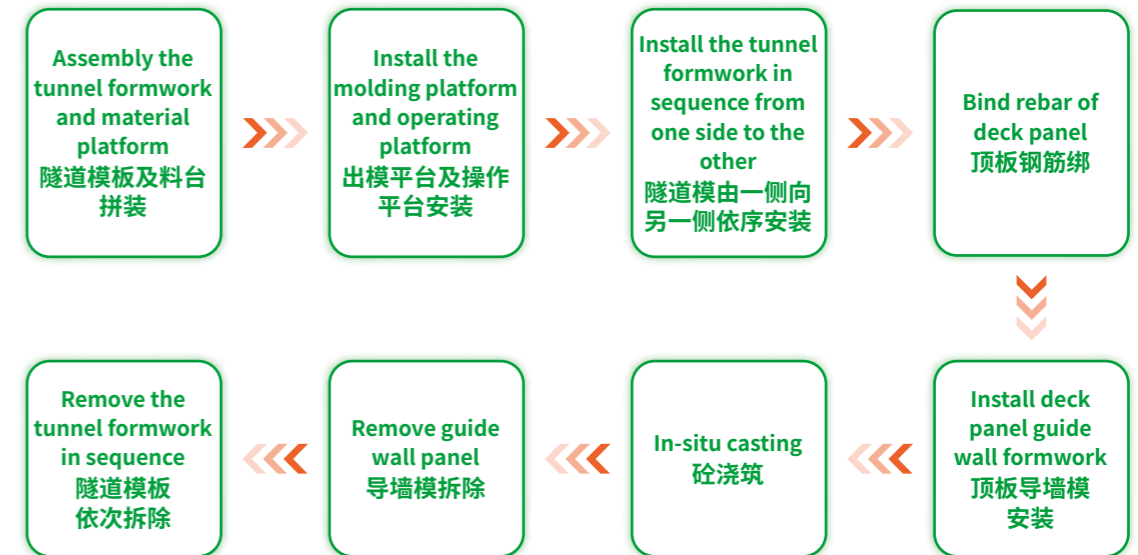
OPERATIONAL FLOW OF THE FORMWORK 施工流程

STEEL TUNNEL FORMWORK INSTALLATION AND OPERATIONAL METHOD 钢制隧道模——安装和施工方法

Assembling Flow / 拼装流程:



Installation Flow / 安装流程:



Operating Platforms Installation / 操作平台安装:



Opening Platform Installation
开间料台安装



External Wall Platform Installation
外墙料台安装

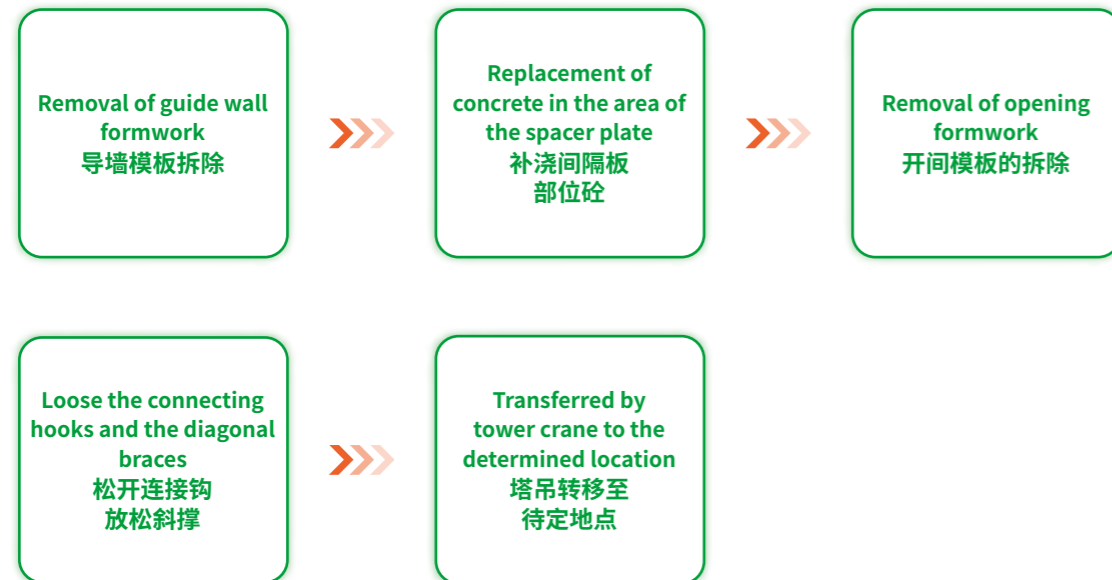


Stairwell Platform Installation
楼梯间料台安装

OPERATIONAL FLOW OF THE FORMWORK 施工流程

DISMANTLEMENT FLOW OF STEEL TUNNEL FORMWORK & ALUMINIUM TUNNEL FORMWORK 钢制隧道模和铝制隧道模的拆装流程

- PS:**
 After concrete cast for the external wall is complete by 24 hours (Concrete strength has reached over 50%), demolition work will be carried out.
 外墙混凝土浇筑 24 小时后（混凝土强度达到 50% 以上），进行拆除工作。



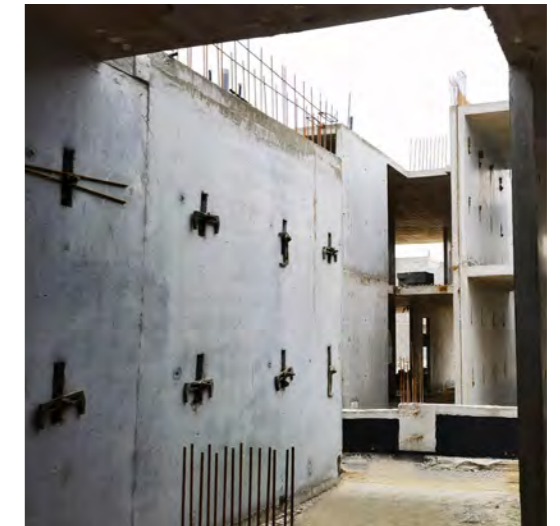
- Note:**
 After the formwork is dismantled, maintenance of the concrete is carried out with the curing agent applied in time. For the construction during winter times, the concrete wall should be kept warm to avoid water leakage resulted from wall cracks.
 拆模后进行混凝土的养护工作，及时涂刷养护剂，冬季施工时墙体注意保温，防止墙体产生裂缝导致渗水。

DEMOLDING EFFECT DIAGRAM 拆模效果图

ALUMINIUM TUNNEL FORMWORK
铝制隧道模



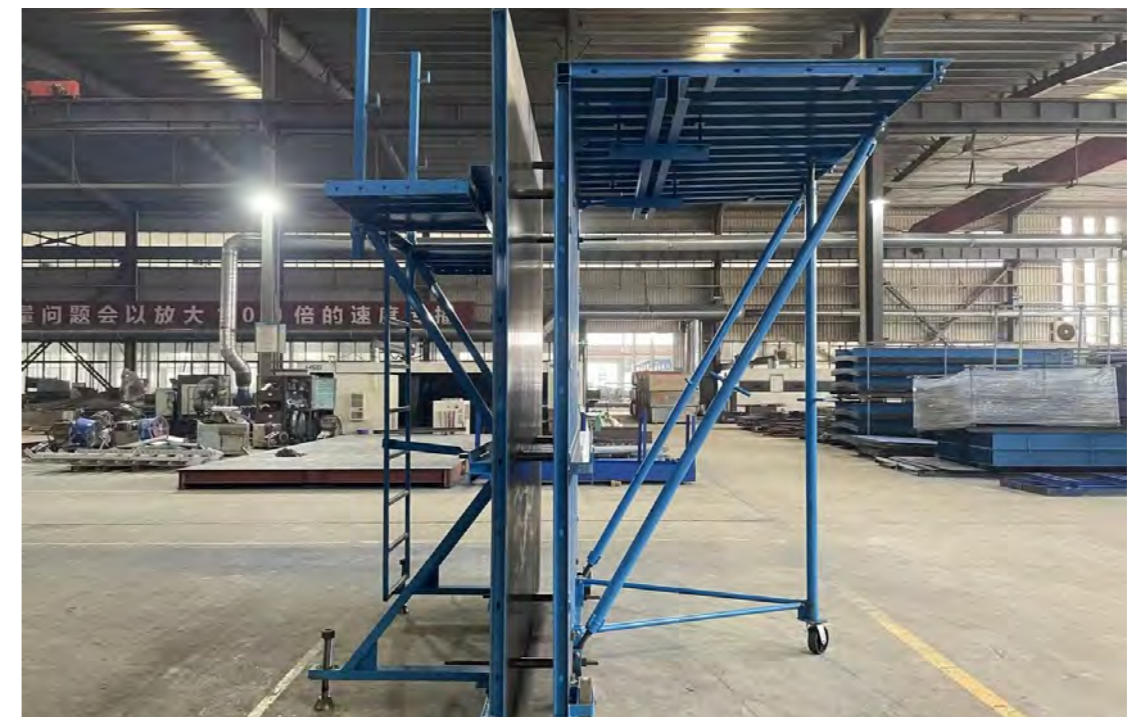
STEEL TUNNEL FORMWORK
钢制隧道模



ALUMINIUM TUNNEL FORMWORK
铝制隧道模



STEEL TUNNEL FORMWORK
钢制隧道模



SERVICE 服务



We provide consulting services for you before bidding and during the project process.
我们在投标前和项目过程中为您提供咨询服务。



We provide services for scheme design and computational analysis, including PE calculation.
我们提供方案设计和计算分析的服务，包括PE专业工程师计算。



We can deliver goods to project locations timely and safely.
我们可以及时和安全地将货物送到项目地点。



We can arrange experienced technical personnel worldwide to solve problems on-site.
我们可以在全球范围内安排经验丰富的技术人员到现场解决问题。

GETO Group

Headquarters:

Greater Bay Area-No. 13 Heqing Road, Tsuihang New District, Zhongshan City, Guangdong Province

Southern China Production Base I :

Cuishan Lake Science and Technology Park, Kaiping, Jiangmen City ,Guangdong Province

Southern China Production Base II :

Huizhou Industrial Transfer Industrial Park, Huizhou City, Guangdong Province

Eastern China Production Base I :

Guangchang Industrial Park, Fuzhou City, Jiangxi Province

Eastern China Production Base II :

Baizhong Industrial Park, Minging , Fuzhou City, Fujian Province

Central China Production Base:

Hi-tech Industry Development Zone, Xianning City, Hubei Province

Northern China Production Base :

China Aluminium Industrial Park, Linqu, Weifang City, Shandong Province

Southwest China Production Base :

Modern Manufacturing Industrial Park, Tongnan High-Tech District, Chongqing City

Northwest China Production Base :

The Circular Economy Park, Anding District, Dingxi City ,Gansu Province

Hainan Production Base :

Gold Medal Port Industrial Park, Lingao County, Hainan Province

ASEAN Production Base :

Negeri Sembilan, Malaysia

Singapore Production Base :

West Region, Singapore

Contact

Sales Hotline: 0086-760-88589004

E-mail: geto_market@geto.com.cn



GETO Website

www.getoformwork.com